

CERTIFIED LAND CORNER RECORDATION

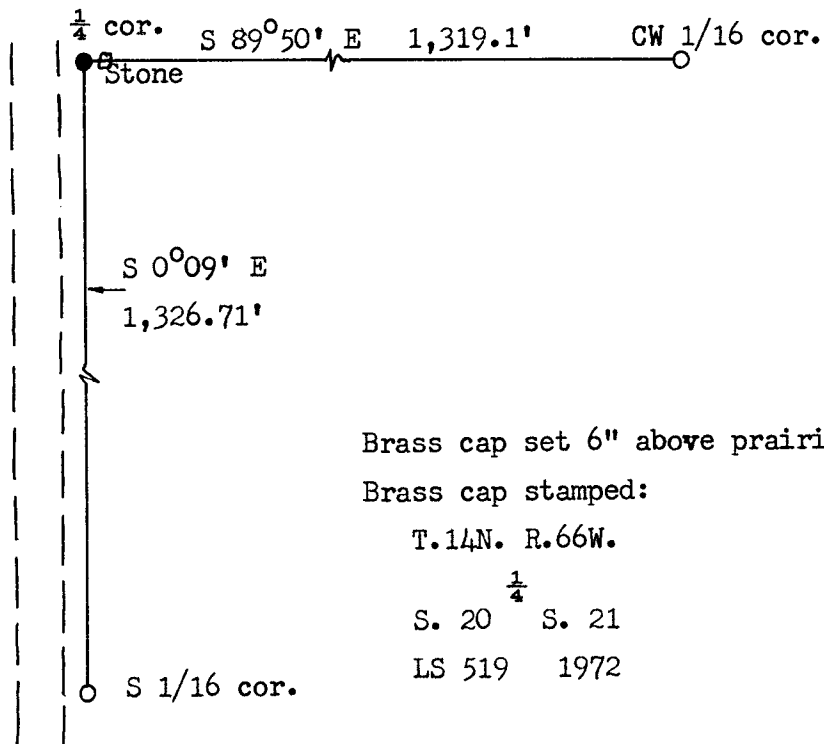
DESCRIPTION OF CORNER EVIDENCE FOUND, AND ORIGINAL RECORD (if known)

LOCATION Found 8" x 10" x 14" granite stone with "1/4" chiseled on west face.
 1/4
 S.20 S.21
 T.14N., R.66W.
 6th P.M.

DESCRIPTION OF MONUMENT AND ACCESSORIES ESTABLISHED
 TO PERPETUATE THE ORIGINAL LOCATION OF THIS CORNER:

Set 1 1/2" dia. x 30" long galv. iron pipe with brass cap.
 Left stone as memorial.

SKETCH, WITH COURSE AND DISTANCE TO ADJACENT CORNER IF DETERMINED IN THIS SURVEY.
 (May Sketch or Paste Reproduction on Reverse Side.)



Brass cap set 6" above prairie surface.

Brass cap stamped:

T.14N. R.66W.

1/4
 S. 20 S. 21

LS 519 1972

I, R.L. Hudson certify that I have carefully performed or reviewed the work done on the diagrammed corner as reported on this recordation form and approve the same.

R.L. Hudson
 Signature of Surveyor

Wyoming L.S. No. 519
 Registration No.

STATE OF WYOMING,
 Office of Clerk and Recorder,
 County of Laramie

This "corner record" was filed for record on the 23rd day of May, 1972, was noted on the cross-index plat and is assigned page No. 14-66, in book No. DONE.

John B. Williams rw
 County Official

| | | | |
|-----------------------|----------|----------|------------|
| Cross Index No. _____ | T. _____ | R. _____ | Mer. _____ |
| _____ | T. _____ | R. _____ | Mer. _____ |
| _____ | T. _____ | R. _____ | Mer. _____ |
| _____ | T. _____ | R. _____ | Mer. _____ |
| _____ | T. _____ | R. _____ | Mer. _____ |
| _____ | T. _____ | R. _____ | Mer. _____ |
| _____ | T. _____ | R. _____ | Mer. _____ |

The State of Wyoming }
County of Laramie } SS

This instrument was filed for record
at 9:18 o'clock A.M. on the
23rd day of May
A. D. 1922 and duly recorded in
Book on page

John B. Williams

County Clerk & Ex-Officio Register of Deeds
By, Deputy